

BETTA

PARTS

...Better brands!

ABTEX

Brake Discs
Brake Pads
Brake Calipers
Wear Leads
Brake Drums
Brake Shoes
Brake Hoses
Wheel Cylinders

DAYCO

Engine
Cooling

ABTEX

Wheel Bearings
Steering & Suspension

...Better parts!

Brake Pads



Premium Shims for Noise Reduction

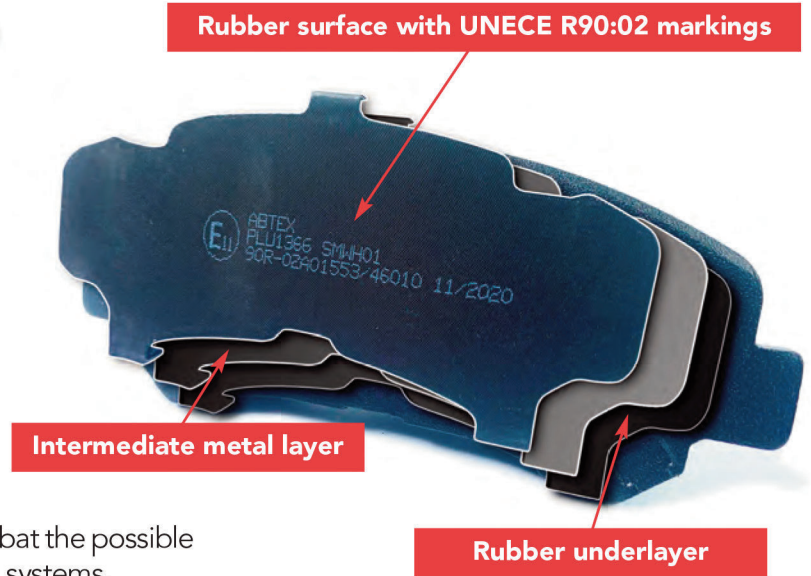
In addition ABTEX PLUS pads have the added benefit of anti-noise accessories as standard.

This means that while meeting all the performance parameters necessary to achieve the European E-Mark (R90), ABTEX PLUS pads are equipped to combat the possible noises which can emanate from some vehicle braking systems.

UN ECER90:02 approved friction material

All ABTEX PLUS brake pads comply with UN ECE R90:02 regulations (R90).

This quality standard covers both performance and dimensional integrity, and ensures the pads perform similar to the original version.



Brake Calipers



ABTEX brake calipers are 100% new units.

Supplying new units means there is no need to handle and process old core units which can reduce profitability due to rejections, paperwork and time spent on recovery.

Manufactured to IATF 16949:2016. The primary focus of this standard is the development of a quality management system specifically for the automotive industry, that provides for continual improvement, emphasising defect prevention.

Wear Leads



ABTEX brake wear indicators are a safety feature to warn the driver if the brake pad is due for replacement or has reached its minimum thickness limit, which is usually 2mm.

The electronic wear lead wire, which comes in contact with the brake disc after wear, will form an electrical circuit which will transmit a signal to the control unit and display a warning light on the dashboard.

Brake Discs & Drums

ABTEX brake discs are manufactured using the latest technology and are designed to match the OEM version in terms of dimensions and performance.

Where required these parts comply with UN ECE R90:02 regulations (R90).

R90 testing schedules include:

- performance
- dynamic friction comparisons
- high load integrity
- thermal fatigue analysis

This extensive range of tests ensures the very best performance while giving excellent value.



Brake Shoes

All ABTEX brake shoes comply with UN ECE R90:02 regulations (R90).

Brake shoes play a similar role to that of pads in disc versions. These shoes have a curved steel surface, one side of which is lined with an abrasive material. This material creates the friction that your wheels need to stop.



Wheel Cylinders

ABTEX wheel cylinders are approved to:

ISO9001:2015, IATF16949:2016, ISO14001:2015 and ISO45001:2018.

The units are low pressure tested to ensure seal quality. Dust caps and seals are manufactured from age-resistant EPDM material and housings and pistons are anodized to provide corrosion and wear resistant surfaces with all units made in the EU.



Brake Hoses

ABTEX brake hoses are tested to SAEJ1401 requirements, burst tests and volumetric expansion tests.

All assemblies are pressure tested at 3000-3600psi and approved to both ISO9001:2015 and ISO14001:2015. The testing is carried out from raw materials through to the final product and all units are made in the UK.



Suspension Arms



Suspension arms are a critical part of any vehicle's steering and suspension system. They allow the wheels to move up and down, while preventing forward and rearward movement and helps to maintain directional input from the driver.

Bettaparts suspension arms are designed to OE standards, ensuring their performance in all conditions.

Tie Rod Ends



Tie rod ends (also known as track rod ends) are a part of the steering system. Tie rod ends connect the tie rod (track rod) on one end to the steering gear mechanism on the other end.

Bettaparts supply high quality steering components that create a strong connection which ensures a durable repair.

Ball Joints



Ball joints are safety critical parts and act as a pivot between the wheels and suspension arm, allowing the vehicle to be steered, while ensuring a comfortable ride. Ball joints are constantly under strain and are subject to significant stress and wear. So it is imperative to fit parts that have been designed and engineered to cope with this stress.

Bettaparts ball joints are designed, tested and engineered to match the OE standards.

Stabiliser Links



The stabiliser link connects between the anti-roll bar and the vehicles suspension. These links reduce body roll during cornering and absorb the shocks encountered from uneven road surfaces.

Fitting strong and durable stabiliser links is therefore important to enable a smooth but controlled ride.

Bettaparts stabiliser links come in either steel, aluminium or reinforced plastic as specified by the OE part.

Bushes



Rubber to metal parts (bushes) are designed to reduce noise and vibration. Modern vehicles contain many variations of these components.

As they are subject to high dynamic stresses during operation, Bettaparts use only the best materials in these components providing optimum strength, flexibility and noise reduction on any application.

Standard Wheel Bearings



A wheel bearing is a crucial part of the wheel assembly that connects the wheel and the axle. It is a set of steel ball bearings or tapers held together by a metal ring. It enables the wheel to rotate smoothly with a minimum of friction. Wheel bearings are safety critical components designed to sustain radial and axial loads caused by gravitation, acceleration, braking & cornering forces.

A problem with the wheel bearings can compromise the smoothness of your ride and the longevity of your tyres, but more than that, it can cause real safety concerns. As such, it is important to have wheel bearings inspected at the first sign of trouble.

Wheel Hub Bearings



Recently vehicle manufacturers are producing wheel bearings that are fully integrated into the hub of the vehicle. Where the OE part is designed this way, the Bettaparts product matches.

There are a large number of hub bearings in the Bettaparts range, these make replacing the bearings much quicker and easier and usually include the fixing bolts as standard.

Some hub bearings are included in the brake disc. Where this is the case, the Bettaparts brake disc reference will include this bearing.



Timing Belt with Water Pump Kits



The complete replacement of the timing system components, including the water pump, provides long service life, high quality and performance of the whole transmission system and of the engine. The water pump also includes bearings which, like the tensioners, are subject to wear.

The pump impellers are also subject to wear and fail. To ensure the original capacity, replacing the water pump together with the other timing components is vital to avoid continuous operation on the engine that can lead to downtime and additional costs for the customers.

On the other hand, when the replacement of the water pump is required on an engine with a high mileage, and when the timing components have never been replaced, it is advised to install a new timing belt and related rigid components.

The Dayco timing belt kit with tensioner and water pump includes:



Water Pump



Idlers



Automatic Tensioner



Screws and Accessories



Timing Belt

Bio Belt in Oil

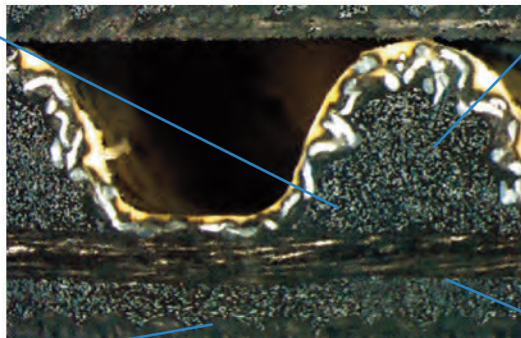


An oil lubricated primary drive. A belt made to work in oil.

Lower emissions, lower noise, higher fuel economy and higher performance. These are the results of a system that helps to downsize the engine, weighs less, has lower elongation, reduces friction and is quieter than traditional chain-drive components.

Body Compound

HNBR compound fully hydrogenated, aramide fibre loaded



Teeth Fabric

Nylon/aramide fabric with PTFE skin

Back Fabric

Nylon/aramide fabric or nylon fabric

Cord Reinforcement

K-glass HNBR treatment ageing resistant

Poly-V Belts



Poly-V belts are produced for auxiliary transmissions of cars, commercial vehicles, industrial vehicles and buses.

The increasing complexity of the auxiliary belt system and the higher loads from the accessories driven by the belt with their higher inertia and power requirements, has resulted in several different materials and construction technologies being developed.

This diverse and upgraded range ensures that the optimum technical solution is provided for each individual application. With its market leading technical range of belts, Dayco has the solution for the latest generation of engines and the best belt for each application to ensure a perfect fit, function and long service life.

Starting from the engineering requirement, Dayco selects the optimal product for each specific transmission to meet the performance and technical functional requirements of each application.

Poly-V belt suffixes (explained)



Standard



Reinforced "S"



Elastic



Fabric on the ribs

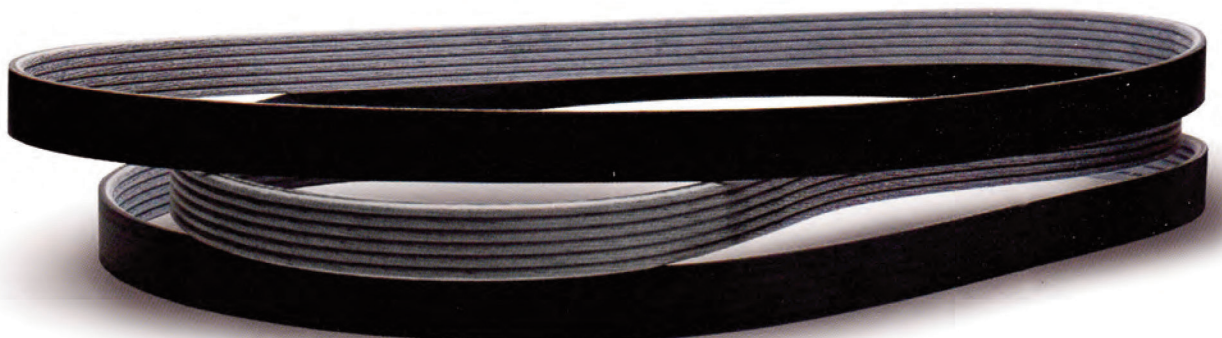
S belts: higher performances compound, **EPDM** written on the belt marking (only in rare cases is not written), example 6PK1836S Fiat 1.9 JTD, 5PK1745S Mercedes Benz A & B Class diesel.

EE belts: elastic belts, on the marking there is not the **EE** but there is the **ELABELT** logo, example 6PK1059EE Ford Focus 1.6 petrol

K belts: internal cord made with aramidic fibers (Kevlar), example 5PK1121K Volvo 2.0 & 2.4 D

DT belts: fabric on the back surface, only one belt in range 6PK1080DT for PSA 2.0 HDi Hybrid

PM belts: white fabric on ribs, only two belts in range 6PK1041PM and 6PK848EPPM both for PSA 1.2 3 cylinders engine (208-2008 etc.)



BETTA PARTS

Bettaparts Ltd
Unit 8a Wharfedale Road
Euroway Trading Estate
Bradford
BD4 6SG
England

Tel: 01274 682 708

info@bettaparts.co.uk



www.bettaparts.co.uk